

Trees – Rooted in Our Future



**2025
Wadena
Soil & Water
Conservation
District**

**Poster
Contest**

Poster Rules

- Posters must have the words **“Trees – Rooted in Our Future”** in letters 1/2” or greater, and promote the theme
- Poster Size: 11” x 17”
Back of poster must have this info:
 - Student’s name
 - Parent’s name and telephone number
 - Teacher, School, Grade and City
 - Wadena Soil & Water Conservation District
- Best to have bold colors that stand out

Prizes will be Awarded

School Level: Certificates

County Level: Cash

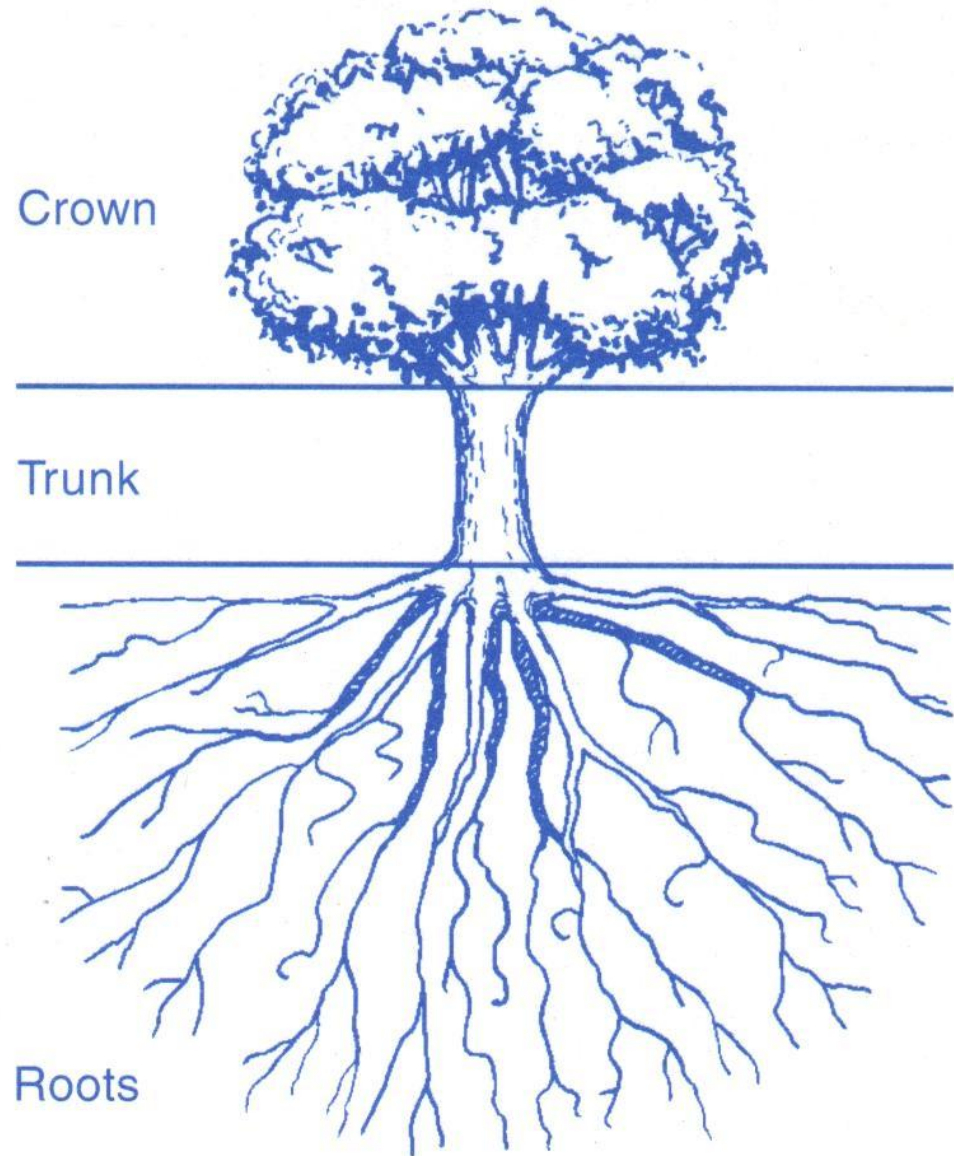
1st place \$30

2nd place \$20

3rd place \$10

Parts of a Tree

- Branches and leaves
 - Food factory
 - Converts sunlight, water and CO₂ into sugars to nourish the tree
 - Holds the seeds for new trees
-
- Carries water and nutrients from the roots to the crown
 - Holds the tree upright
-
- Hold soil in place
 - Take up water and nutrients for growing
 - 99% of tree roots are in the top 3 feet of soil



Parts of a Forest

LAYERS

Canopy

Understory

Shrubs

Forest Floor

Roots



Canopy



Formed by the crowns of the largest trees

Photosynthesis happens here: sunlight + CO_2 + H_2O
= food for tree and clean air for us

Insects call this home, which attracts insect-eating
animals

Understory



Smaller trees pushing up toward the light
Height and width of trees can be different
Animals, birds, and insects use this layer

Shrubs



Many kinds of shrubs and vines
Offer nesting and feeding areas
Home of many birds

Forest Floor



Leaves, twigs, branches, and fallen trees lie here
Insects, fungus, ants, and other very small animals
live here

Roots



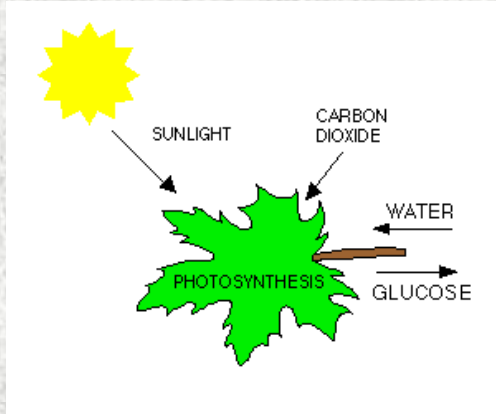
Can't see these at all unless above ground
Draw up water and minerals from the soil
Anchor the trees in the ground and keep it upright

Trees are rooted in our:

1. environmental
2. economic
3. aesthetic

Future!

Trees – Rooted in our Environmental Future



Trees affect our atmosphere

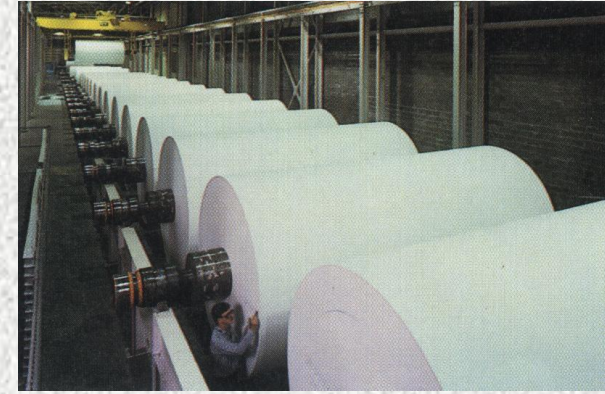
Trees protect us from wind and keep soil from blowing away

Trees directly affect our soil

Soil and trees join together to improve the quality of our water

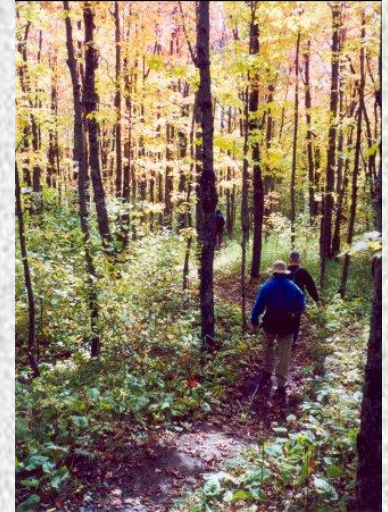
Trees provide living places for wildlife

Trees – Rooted in our Economic Future



Trees are a major Minnesota crop
Daily we are surrounded by products of trees
Trees increase property values

Trees – Rooted in our Aesthetic Future



Trees satisfy our needs for beauty, quiet, and diversity

People gain a sense of well being while in a forest or park

Trees provide areas for recreation

How do we plan for the future?

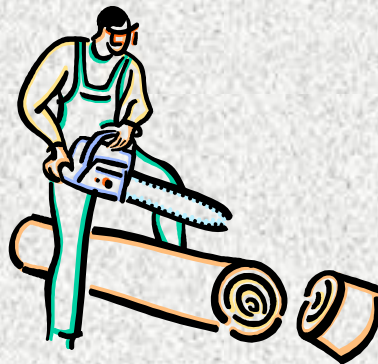
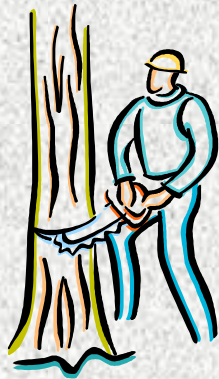
Trees are a **renewable** resource.

This means that we can
use them and grow a new
crop of trees for the future.

How do we plan for the future?

Trees are also a **limited** resource.

Through proper planning and management, we can use trees and still always have them.

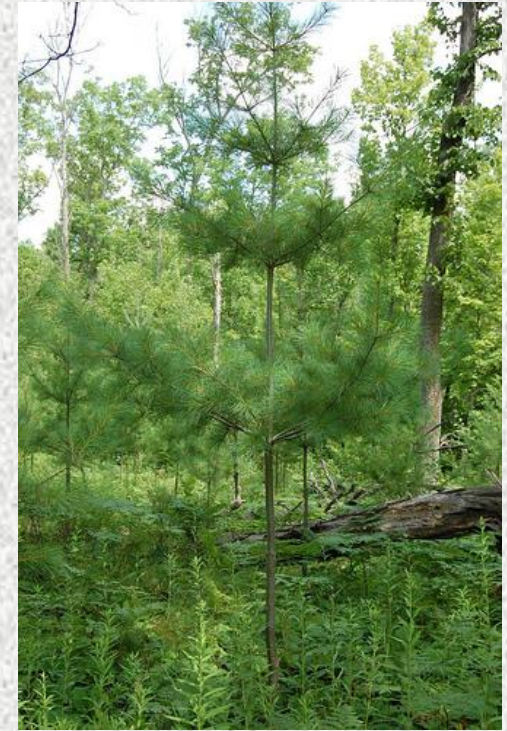


How do we grow trees?

Seeds



Seedling



Sapling

How do we plant trees?



Seedling



What can we do to manage trees?



Pruning



Thinning



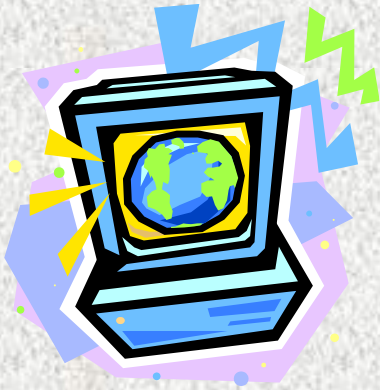
What can we do to manage trees?

Harvesting



After harvesting, replant more trees!

Where can I go to find information about trees?



Internet



Teachers
Parents



Libraries

<https://www.dnr.state.mn.us/arbormonth/teachersguide.html> (Teachers Guide to Arbor Month)

<https://www.arborday.org/youth-education> (Arbor Day Foundation Youth Education)

<https://www.plt.org/educator-tips/activities-explore-uses-trees/> (Project Learning Tree)

<https://extension.umn.edu/forestry/creating-climate-ready-woodlands> (Creating Climate Ready Woodlands)

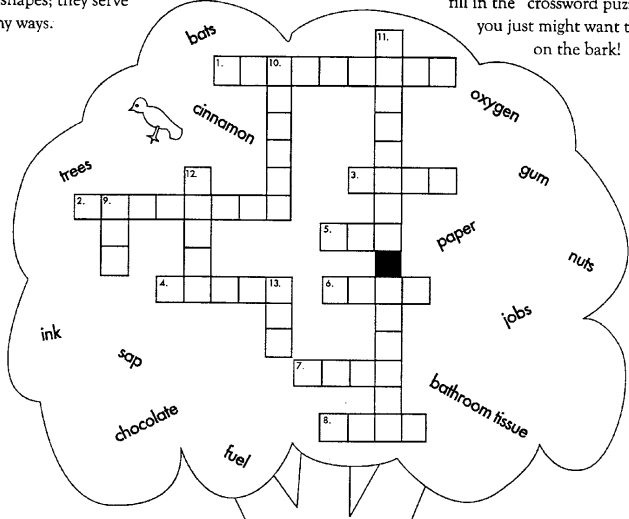
Tree-Mendous



Tree (tre)n. A woody plant that is at least 15 feet tall when fully grown; trees grow taller, live longer, and become more massive than nearly any other living thing; trees grow in many sizes and shapes; they serve us in many ways.

NAME: _____

You'll think trees are tree-mendous when you see some of the things they give us! Use these words to fill in the "crossword puzzle" ... then you just might want to pat a tree on the bark!



Across

1. Ground, roasted beans from the cocoa tree make _____.
2. _____ is a spice made from the bark of certain trees.
3. Trees give _____ to thousands of Minnesota workers who make these tree products for us!
4. Arbor Day is a special day when people learn about, plant, and care for _____.
5. Thank a tree for your chewing _____.
6. _____ are a type of food from trees.
7. The wood of ash trees makes great baseball _____.
8. Enough wood is burned for _____ each year in the U.S. to build a 100-foot-tall wall of wood that could stretch from New York to San Francisco.

Down

9. The _____ that is printed on this page starts with trees.
10. Trees supply _____ for the air we breathe.
11. Machines spin out 6,000 feet of this paper product every minute!
12. Each of us uses 600 lbs. of this tree product every year.
13. 30 to 40 gallons of _____ from a sugar maple tree boil down to one gallon of maple syrup.

Wadena SWCD 2025 Poster/Essay Contest

U K T G W I N D B R E A K L E F
 S O A N I M A L S P R U N I N G
 D E T I M I L S B U R H S Z V E
 P A P E R R C A C G Z I N M I E
 E C R U O S E R I S T O O R R C
 P H O T O S Y N T H E S I S O O
 G L Y R O T S R E D N U R N N N
 N N P G B K C C H W S U S B M O
 I M I M N A Z T T T A E O F E M
 N G E T N I A R S H R B I H N I
 N H N O S T L E E V O R L F T C
 I S P I I E R D A P E U U E A S
 H Y E B L O V T E W L T S P L W
 T M A E F P I R O E U A J I E C
 O H V V D O A O A R S N N T N D
 G R O U N D D S E H X Z I T X G

AESTHETIC
 CONSERVATION
 FIREWOOD
 GROUND
 HOUSING
 PHOTOSYNTHESIS
 REPLANT
 SAPLING
 SHRUBS
 UNDERSTORY

ANIMALS
 ECONOMIC
 FOREST
 HABITAT
 LIMITED
 PRUNING
 RESOURCE
 SEED
 SWCD
 WINDBREAK

CANOPY
 ENVIRONMENTAL
 FUTURE
 HARVESTING
 PAPER
 RENEWABLE
 ROOTS
 SEEDLING
 THINNING

May 16, 2025
Contest Due Date

Remember
the
Theme:
Trees - Rooted
in Our Future

Entries will be judged on
May 19, 2025

