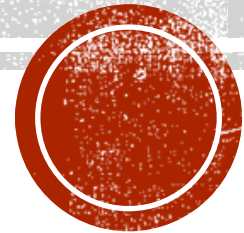


QUEENS SWA PHEASANTS FOREVER PROJECTS 2024-2025

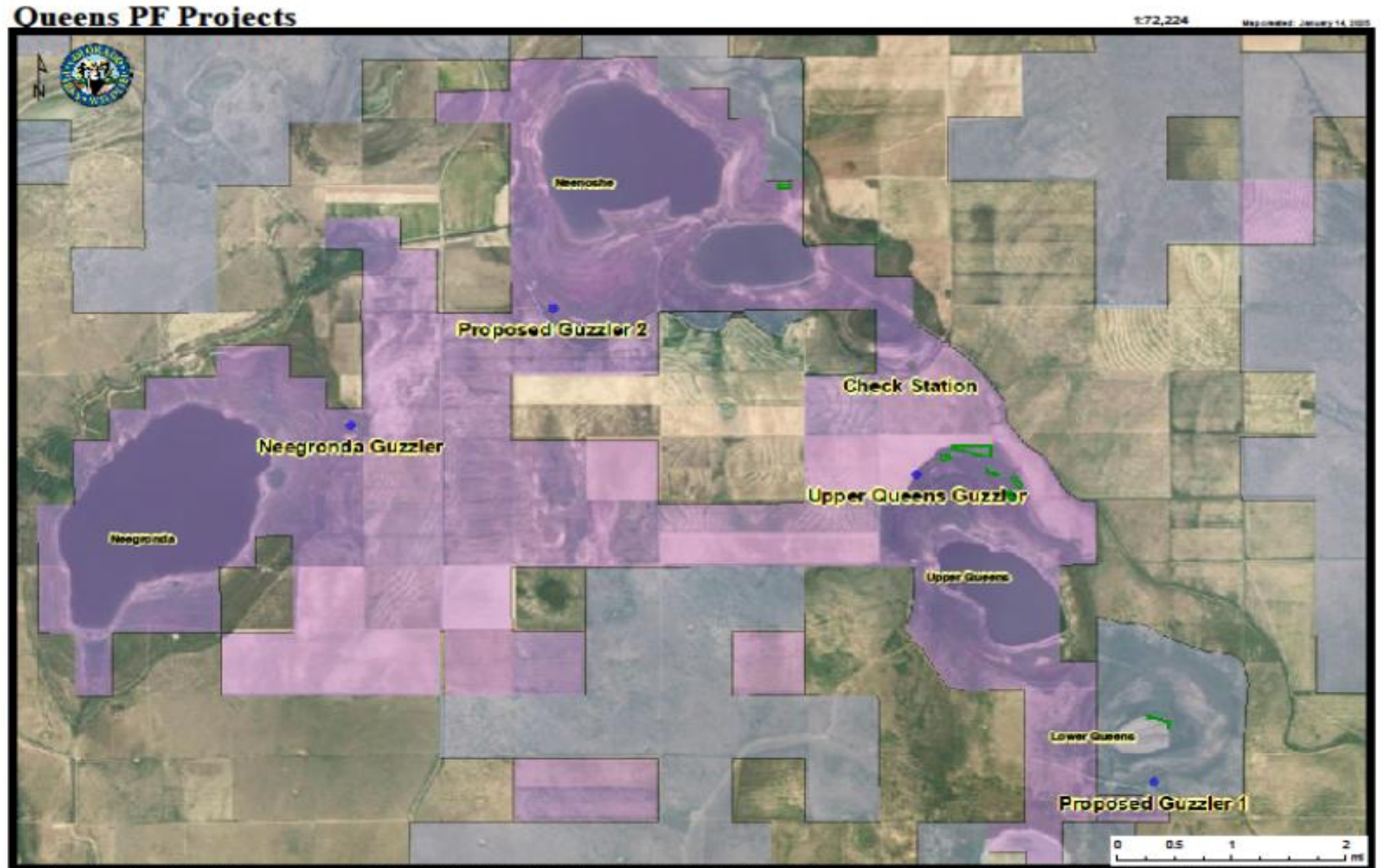
Food Plots and Wildlife Guzzlers

CPW Wildlife Technician Garrett Krumwiede



OVERALL PROJECT MAP

- Blue Dots=Guzzlers
- Green Shaded=PF Food Plots



This map was generated by the Colorado Hunting Atlas (<https://data.openstate.org/huntingatlas>). Information depicted is for reference purposes only and is compiled from the best available sources. Reasonable efforts have been made to ensure accuracy. The Colorado Parks and Wildlife is not responsible for damages that may arise from the use of this map. Mapped property boundaries may or may not reflect actual legal holdings. It is the hunter's responsibility to know where private property exists. Colorado law does NOT require landowners to fence or mark property boundaries. For more detailed or missing information, please contact the Colorado Parks and Wildlife at (303)297-1110 (9-5 Mon-Fri MDT).



GUZZLER DETAILS

- 20ft x 20ft roof
- 600 gallon storage tank
- 40 gallon drinker unit with adjustable float valve (Rainmaker Wildlife)
- For every 100 sq ft of roof, roughly 62 gallons of water will be collected for every inch of rain
 - 20' X 20'=400sq ft
 - Meaning a 20x20 roof will collect four times the amount as a 10x10 roof
 - 62x4=248 gallons of water for every inch of rain



Maps Showing Proposed Locations of Funded Guzzlers



UPCOMING GUZZLER PROJECTS

- Funding received from Pheasants Forever (Pikes Peak Chapter) for 2 new guzzlers in Fall of 2024
 - Both guzzlers will be installed by end of winter (In progress)
 - 1 guzzler will be placed on the south side of Lower Queens Reservoir outside of high water line (Currently dry)
 - 2nd guzzler will be located on the southwest side of Neenoshe Reservoir
- Both will be out of sight from roads to increase wildlife usage
- All guzzlers in more open areas will have juniper and/or shrubs planted around them after completion



UPPER QUEENS GUZZLER

- Built in December 2023 to replace old guzzler from early 2000's
- First of this system built on the wildlife area
- Reservoir went completely dry over the previous summer, so this water source was crucial to keep wildlife around property







NEEGRONDA GUZZLER

- Built in August 2024, first guzzler on this property
- Similar to Upper Queens, reservoir will be dry within next 1-2 years





Upper Queens Plots



2024 FOOD PLOTS

- Food Plot Seed was donated to Queens SWA in spring of 2024
- Around 30 acres planted with PF seed mixes with most success coming from sorghum based blends
 - Western Food & Cover blend performed best, followed by Winter Shield, then Rooster Booster blends
 - Drought conditions affected success of some plots (expected as Queens SWA is all dryland farmed)
- All seed this year was broadcast spread onto disced soil and a drag harrow was used to work the seed in





Upper Queens Plot in Kochia Flat



Neenoshe Plot (First Year Planted)



CPW FUNDED PLOTS IN 2024

- Some plots were planted with seed purchased by CPW
 - Lower Queens, Neenoshe, and Upper Queens
 - Each property had 1-2 fields planted to corn and winter grains
 - 15 acres planted to corn, only 5 of which produced a crop (Grasshopper damage and drought contributed to failed crops, but grasshoppers are a great summer food source for upland birds and turkeys)
 - 20 acres planted to winter grains, little to no fall moisture made for 40% success in crop survival
 - Later planted winter grains (Mid October) had higher success from 4" moisture event in Nov.
 - Neegronda
 - Initially planted 3 acres with Pheasants Forever Winter Shield mix, but lack of moisture caused crop failure
 - Replanted in October with winter rye to act as a cover crop in spring
- Due to soil conditions, some lake beds had too much moisture to plant in 2024





Successful Corn Plot (Neenoshe)



**Neegronda
Guzzler
Winter Rye
Plot at
Planting (top)
and in
December
(bottom)**



2025 FOOD PLOT PLANS AT QUEENS SWA

▪ Upper Queens

- Dry lake bed will open up 100+ acres of fertile soil for planting
 - Roughly 30 acres will be planted to sorghum, corn, and winter grains
- If lake is filled, 8 acres will be planted in food plots surrounding the lake edge

▪ Lower Queens

- Currently divided into 3 food plots each 4-6 acres
- Leftover food plot seed from 2024 will be used to plant some of these acres
- Similar to Upper Queens if lake is filled, 10 acres will be planted outside of water's edge

▪ Neenoshe

- Dry lake bed on east side of property opens up 100 acres to plant
 - Roughly 30 acres will be planted to corn, sorghum, and winter grains
 - Some existing food plots will also be planted for a total of 45-50 acres of food plots

▪ Neegronda

- Some dry lake bed will be planted <20 acres
- Existing 6 acre food plot will be planted to sorghum and winter grains (50/50)
- This property has not seen many upland birds, so priority is given to other food plots



**THANK YOU FOR YOUR SUPPORT IN
WILDLIFE AND HABITAT MANAGEMENT!**

